

# Shipping System

## Objective

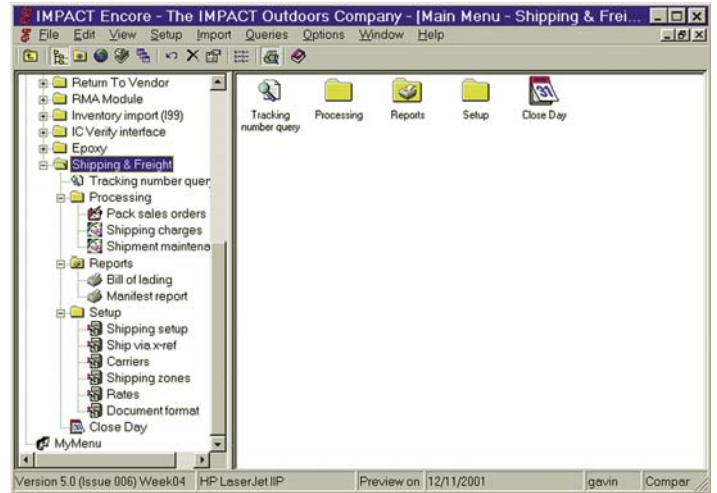
The Shipping System facilitates efficient packaging methods and ensures the accuracy of freight charges based on actual product shipping weights and up-to-date carrier rates.

## The Value of the Shipping System

- Operator workload is reduced by means of controlling the packing process. Packers see only the orders that are due to ship.
- Up to date shipping rates and electronic scales provide more accurate shipping costs
- Provide customers during the order entry process an estimated cost of shipping
- Shipping costs and tracking numbers are automatically updated in the Sales Order module
- Reports can be previewed on-screen and/or e-mailed

## Matching SYSPRO to Your Business

- Calculate packed weight based on manually entered weight or from an electronic scale
- Ensures the most up to date shipping rates from FedEx, UPS, or Airborne carriers. The system also caters for manually entered rates
- Integrates with electronic scales
- Records items being packed into a box. A query option allows verification of the box contents
- Sales Order status is automatically updated
- Shipping charges are posted to the Sales Order
- Tracking numbers are posted to Sales Order
- Shipping labels and Bill of Lading documentation
- Shipping Manifest documentation
- Carrier "Close Day" function
- Optional change of status to "8"



## Audit Trails and Reporting

- Query tracking and box numbers on-screen
- Print shipping labels for each of the supported carriers
- User defined formatting of the Bill of Lading
- Print manifest documents used by carriers

## Integration

- Integration with the Inventory Control and Sales Order modules
- E-mail reports via the Office Automation Module